

New Mobile Federal Courthouse and John Campbell Courthouse Renovation

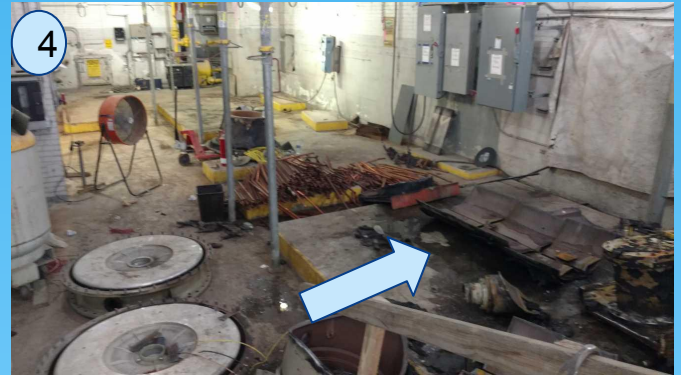
Town Hall Bulletin



Issue No. 33

November 2018

TAKING APART A TRANE . . . PIECE BY PIECE



Sequence showing the demolition of a Trane chiller from the basement mechanical room
SOME things are easier to demolish than others. With basement mechanical equipment, like the chiller, to get it out of the building takes reducing it to manageable pieces to fit through the doorway.

FRAMING BEGINS: While demolition of mechanical plant equipment continued along with demolition of ductwork, ceilings, walls, windows and finishes throughout the building, some new construction has started. Layout and framing of new walls began in November on the 5th and 4th floors. With the new walls comes the start of in-wall and above ceiling electrical and mechanical rough-ins on those floors.

Contacts:

General Contractor
Construction Manager

Yates Construction George Yates
APSI CM Jack Solari

Phone: 228-348-0608
Phone: 214-683-7987

gvates@wgvates.com
jack.solari@apsicm.com